

The Major BBS[®]

*An
Open
Platform
for
Creating
Your
Own
Online
Service*



*“We estimate
The Major BBS has
saved us \$10,000
in hardware costs
alone.”*

*Chris Adler
WordPerfect Corp.*



E-mail, group discussion forums, teleconferencing, file transfers, questionnaires: up to 256 simultaneous users can be doing all this, and much more, on your 386, 486, or Pentium-class desktop computer.

Use modems, LAN connections, serial ports and X.25 circuits interchangeably. Use our software locks and keys for airtight access security. Easily configure your menus, displays, reports, and user account classes to your exact requirements.

Flexible

Configurable

Extensible

The Major BBS[®]

This online platform consists of several powerful subsystems. The E-mail subsystem offers full-screen editing, mail networking, carbon copies, personal and global distribution lists, message importing, auto-forwarding, return receipts, and individual user preference settings. Your users can send and receive mail through Novell's MHS, and with software extensions, the **INTERNET**. Messages may have file "attachments," and may be posted either publicly or privately.

Message Forums (up to 3,500 of them!) can be used for discussion areas, keyword-searchable Q&A databases, classified ad listings, and many

“The Major BBS is a powerful, multi-line bulletin board system with many built-in and available options, which is still easy even for a novice to set up and operate.”

***John McCormick
Newsbytes***

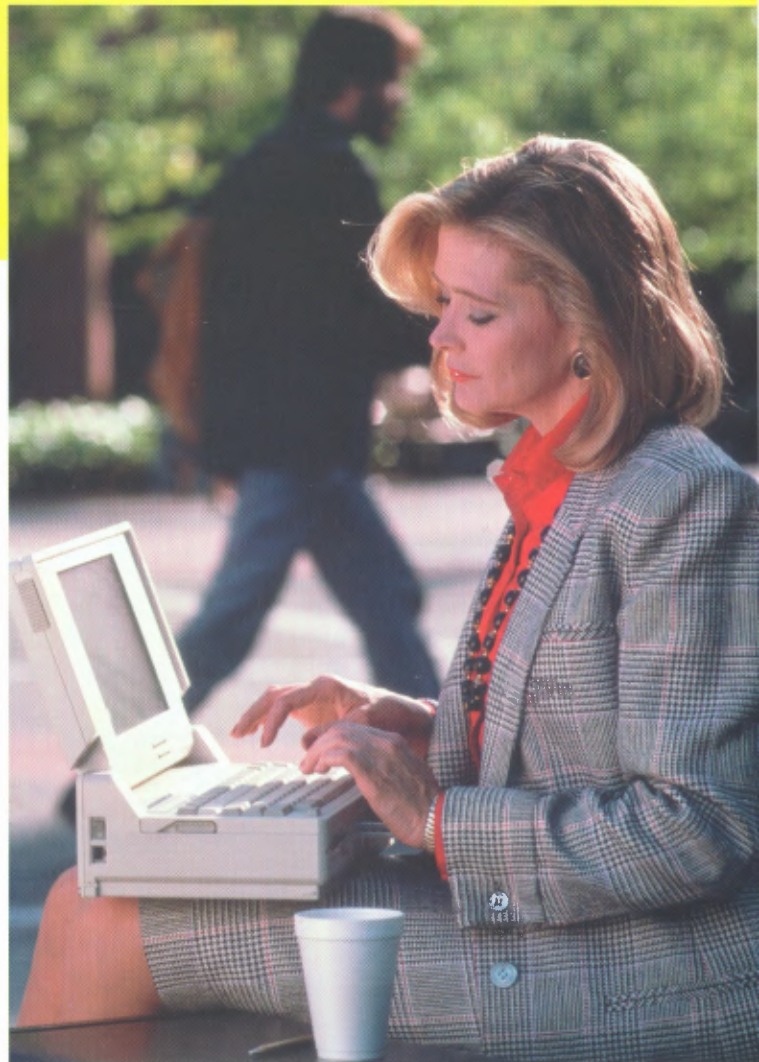
other purposes. As system operator, you may assign individual security access levels to each of your users in each of your Forums. Users may scan through messages chronologically, by topic, by conversation “thread,” by lists of keywords, or by unique message number. Users have instant access to their unread messages through the “quickscan” feature, and may request that Forum mail addressed to them also show up in their personal mailboxes. Files may be attached to messages, and networking tools are available for FidoNet, RelayNet, MajorNet, WorldLink, NetACCESS, and of course **INTERNET** newsgroups. You may also delegate special “Forum-Op” privileges, such as the ability to delete Forum messages and approve uploaded files for download.

Our built-in QWK-mail module gives your users the option to download their E-mail and Forum messages all at once. They can read and reply to these messages offline, then upload their reply packets, thus saving connect-time costs.

You can use the powerful File Library subsystem to offer software updates, documents, shareware, spreadsheets, or any other files for download. Users can scan for files by category, by file name, by file date, by upload date, by popularity, or using wildcards or Boolean keyword expressions. Files may be tagged for later download, or downloaded on the spot using ZMODEM, YMODEM, YMODEM-g, XMODEM, XMODEM-1K, KERMIT, Super KERMIT, or ASCII. Convenient pick lists, full-screen file info, and hot keys speed your users through the process. As system operator, you can control user security access, manage and review uploads from your users, offer CD-ROM files for download, etc. — or you can delegate these privileges to “Lib-Ops.”

The Polls and Questionnaires module is ideal for market research, application forms, opinion polls, and many other uses. It features intelligent branching, account macros, and auto-tallying of results. Users can be optionally notified about — or forced to take — new polls at log-on time. You can conditionally grant files, keys, or online time to users upon completion of a questionnaire.

How can you offer all of this, and much more, to up to 256 simultaneous users? Read on...



“It was almost shocking how bids from the big VANs to provide similar services were \$100,000+ (with emphasis on the + side) more than we were able to do it in-house with The Major BBS.”

***Nathan Hammond
Baltimore Gas & Electric***

“It’s amazing! Even with 62 users online at once — downloading files, reading mail, teleconferencing — there’s almost no slowdown at all.”

*Kevin Ehlers
Gateway 2000*

Combining blindingly fast interrupt processing with the use of protected-mode operation under DOS, The Major BBS supports many more simultaneous users at high baud rates than you might have thought possible. By using DOS for the host computer, rather than high-overhead multitaskers, we’ve freed up enough CPU resources to make massive parallel file downloading, graphical user interfaces, and real-time Sysop statistics displays truly practical.

Ease of use

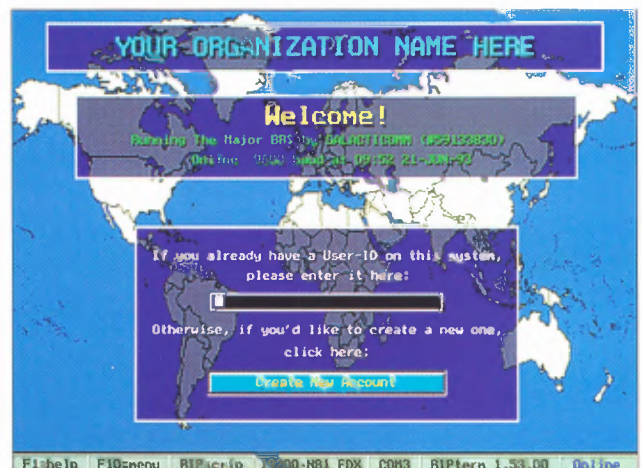
High performance

Low cost

All in one

The Major BBS

Online security is handled using “locks and keys.” The “Master” key gives you unlimited access throughout the system: look up user account information from any prompt; become “invisible” when you



need privacy; enable and disable menu options quickly and easily; modify, move, approve or delete messages and files; create, delete, and manage Forums, Libraries, Polls, Doors, etc. From the Remote Operator Menu, choose from over 30 privileged commands: view real-time system statistics, maintain user account and security status, change the log-on message, start a timed event, issue basic DOS commands, and more. You’ll be able to manage the system effectively whether you’re across town or across the ocean.

Eight unique screens at the main console of the BBS provide information and special capabilities such as user account details; in-depth demographic and usage statistics and graphs; online user summary by channel; an audit trail of system activities; monitoring of channel input and status; and technical information about the system hardware and soft-

ware. Use the "emulate" feature to peek over a user's shoulder, or to step in and offer a helping hand. Or, you can log on locally to jump into a chat with a caller, or write a memo to your staff.

With The Major BBS, your online service can have a different look and feel from any other system. You can change almost every prompt, menu, and message displayed to users. Our multi-lingual/multi-protocol architecture lets callers select the interface of their choice. The English language interface for ANSI and RIPScrip (a mouse-driven, graphical user interface protocol) comes standard, and you can optionally add up to 50 simultaneous languages and presentation protocols. Use the built-in Menu Tree designer to organize the menus presented to your users: each selection can lead to another menu, or to a file display, or to a specific module such as E-mail, File Libraries, logoff, etc.

Create as many "classes" of users as you need, each with a time limit per call, time limit per day, options for billing, an expiration date, security "keyring," and much more. Generate printed reports on demand, such as user account listings, distribution of "keys," mailing labels, and system Audit Trail.

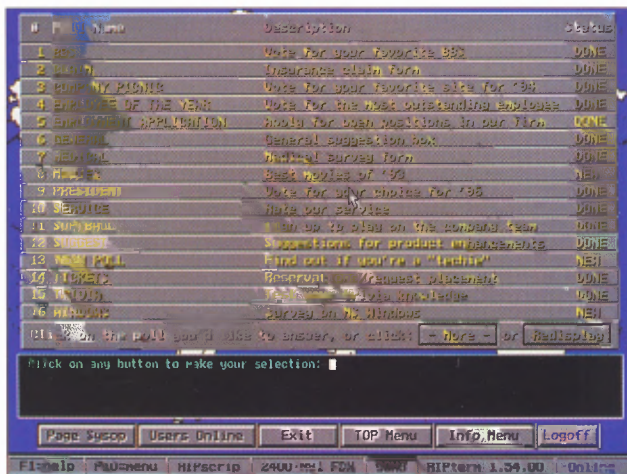


Around your office or around the world, your users can access your system. Use internal and external modems, as well as serial connections to other machines, at speeds up to 57.6K bps. Assign IPX Direct channels to specific workstations on your LAN.

Add the **Advanced LAN Option** and you can configure IPX Virtual and SPX channel groups to actively "listen" for calls from anywhere on your LAN. The BBS actually becomes a server on your network (via Novell's Server Advertising Protocol), much the way a computer with a hard drive becomes a file server.

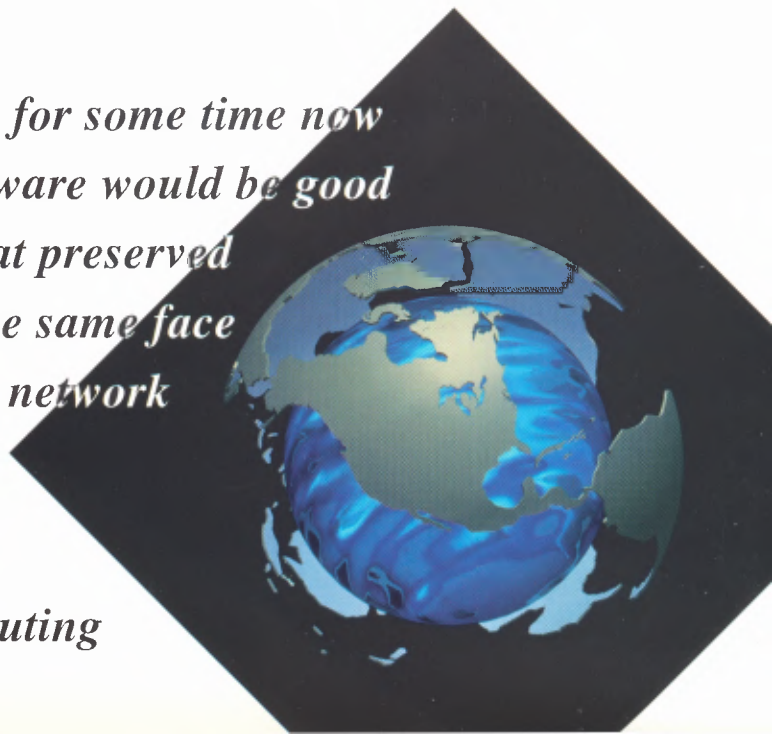
With the **X.25 Software Option** and a single-slot PC XNet card, you can directly hook up to X.25 networks such as SprintNet, CompuServe, and ADP. Your leased line then plugs directly into your computer, eliminating the need for a PAD — your X.25 service is efficient, reliable, and less expensive. (CCITT recommendations X.29 and X.3 are also fully supported.)

Widely available router technology and NetWare NLMs let you handle "telnet" connections from the **INTERNET**.



"I love software like this. I have felt for some time now that the first really effective groupware would be good network-oriented BBS software that preserved dial-up capability and presented the same face to the user no matter where on the network that user accessed the BBS."

Barry Gerber
Network Computing



“I was very impressed with Galacticom’s open architecture. Internet access, online databases, fax capability, and an easy-to-use interface. No other online platform for DOS, Windows, or Macintosh.”

Everyone has a different vision of what the perfect Bulletin Board System would be. That’s why it’s important to choose software that will give you the flexibility to implement *your* vision. The Major BBS gives you this freedom.

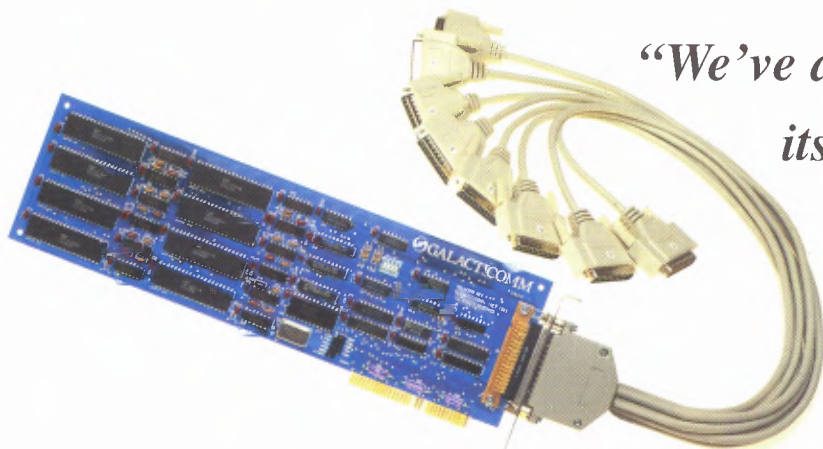
Integrate up to 15 megabytes of off-the-shelf add-on options. Installation is as easy as “A:INSTALL”. The Major BBS takes full advantage of DLL technology to dynamically link these options into your system. Use the Menu Tree designer to place new options in the most convenient location. Full security control lets you decide which users will have access to these services.

Take advantage of fax/modem technology with the **Fax/Online Add-on Option**. Provide fax-mail services to your users, as well as a document database for fax requests — a “hard copy” information server that can be utilized by your prospects, customers, and field sales staff.

Why be 74026.8073@compuserve.com when you can be *yourname@yourcorp.com*? Plug into the “information superhighway” of the Internet with **Major Gateway/Internet**. This UUCP-based solution lets you make regular “mail runs” for Internet mail and newsgroup feeds. Authorized users can write outgoing messages and establish their own Internet addresses on your system. A “remote archive server” feature lets you make files available worldwide to anyone who has access to an Internet messaging host. Support for PageSat™ and other satellite newsgroup providers is included.

Online database power can be added with **The Major Database**. No programming required — all search and data entry procedures are created with an easy-to-use configuration utility. Full access-level control is provided, and the software automatically prevents conflicts when multiple users need to access the same records. The B-Tree key index is amazingly fast and works for databases up to 1,000,000 records.

For document-oriented database applications, choose the **Search and Retrieve Add-on Option**. Thousands of text files can be organized into categories, along with accompanying JPEG graphic files and fax-ready files (works with the Fax/Online engine). Users can perform simple or advanced keyword searches and then view or download documents that match their criteria.



“We’ve appreciated the expandability of its open architecture. The Major BBS makes it easy to integrate with disparate products.”



*re. It was relatively simple to plug in
the order entry subsystem. In my
UNIX is this versatile.”*

Ken Royer

U.S. Department of Commerce



Other add-on products include the **Dial-Out**, a scriptable utility for connecting users to outside services; the **Shopping Mall** for online order entry and catalog applications; and the **Entertainment Collection**, a stunning combination of multi-player games and chat features for consumer-oriented, for-profit systems.

You can begin with just one or two lines using the baseline package. It works for up to two simultaneous users over modems and serial connections (COM1/COM2/COM3/COM4 are fully supported), as well as IPX Direct LAN channels.

For larger applications, or as your system activity increases, you can incrementally add **User Six-Packs**. Each User Six-Pack takes only a few minutes to install and lets you support another six simultaneous users, without changing your existing configuration or data files.

Up to 256 simultaneous callers

can be handled on a single

Pentium-class machine.

You will never have to worry about tangles of cable, racks full of computers, or layers of multi-tasking software with The Major BBS. To match our software breakthrough we provide a line of premier multi-user hardware...

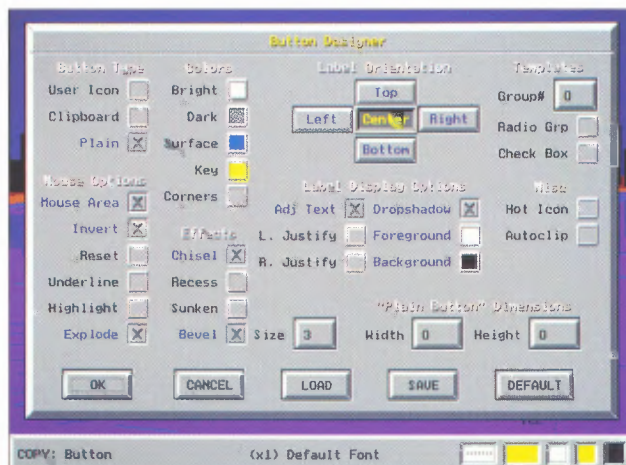
The **GalactiBox** is an expansion chassis with slots for up to 16 internal modem, fax/modem, or serial cards. Install off-the-shelf, Hayes-compatible modems, and you're ready to go. Each GalactiBox comes with an interface card that plugs into your BBS machine. You can connect or "daisy-chain" up to 16 GalactiBoxes to one machine.

To expand on a smaller scale, you can go with the **GalactiBoard**, an 8-port serial card for external modems. Each GalactiBoard includes 16550 UARTs for error-free high-speed file transfers, as well as a complete set of serial cables. To rack up dozens of external modems, you can use up to 16 GalactiBoards in a GalactiBox.

*e Major BBS, as well as
S is very flexible and allows us
grams to achieve the results we seek.”*

Roger Wegehof

Borland International



“We have found Galacticom source code easy to understand and easy to modify. The API’s are remarkably programmer-friendly.”

*Kerry Sergent
Sierra On-Line*

You don't have to be a programmer to benefit from the open architecture of The Major BBS. Dozens of commercial third-party developers have created hundreds of plug-in enhancements to The Major BBS for you. Everything from credit card verifiers, to photograph databases, to whiz-bang file server managers can be added by simply typing "A:INSTALL".

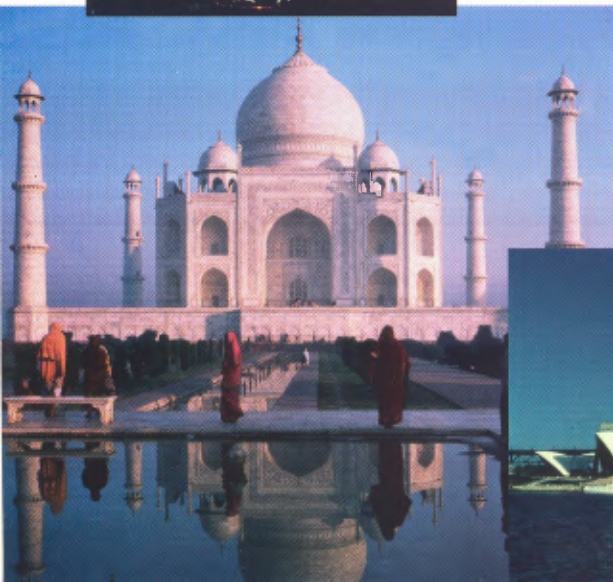
The availability of the C source code to the entire system has sparked a thriving mini-industry — assuring that you will never be locked into a closed platform. If you have special requirements that the off-the-shelf software doesn't handle, you (or a consultant, or your in-house programmer) can modify and extend The Major BBS to your exact specifications. The **Developer's C Source Kit** includes everything you need to customize your BBS — or write your own commercial add-ons — and works with Borland C++ and the Phar Lap DOS Extender.

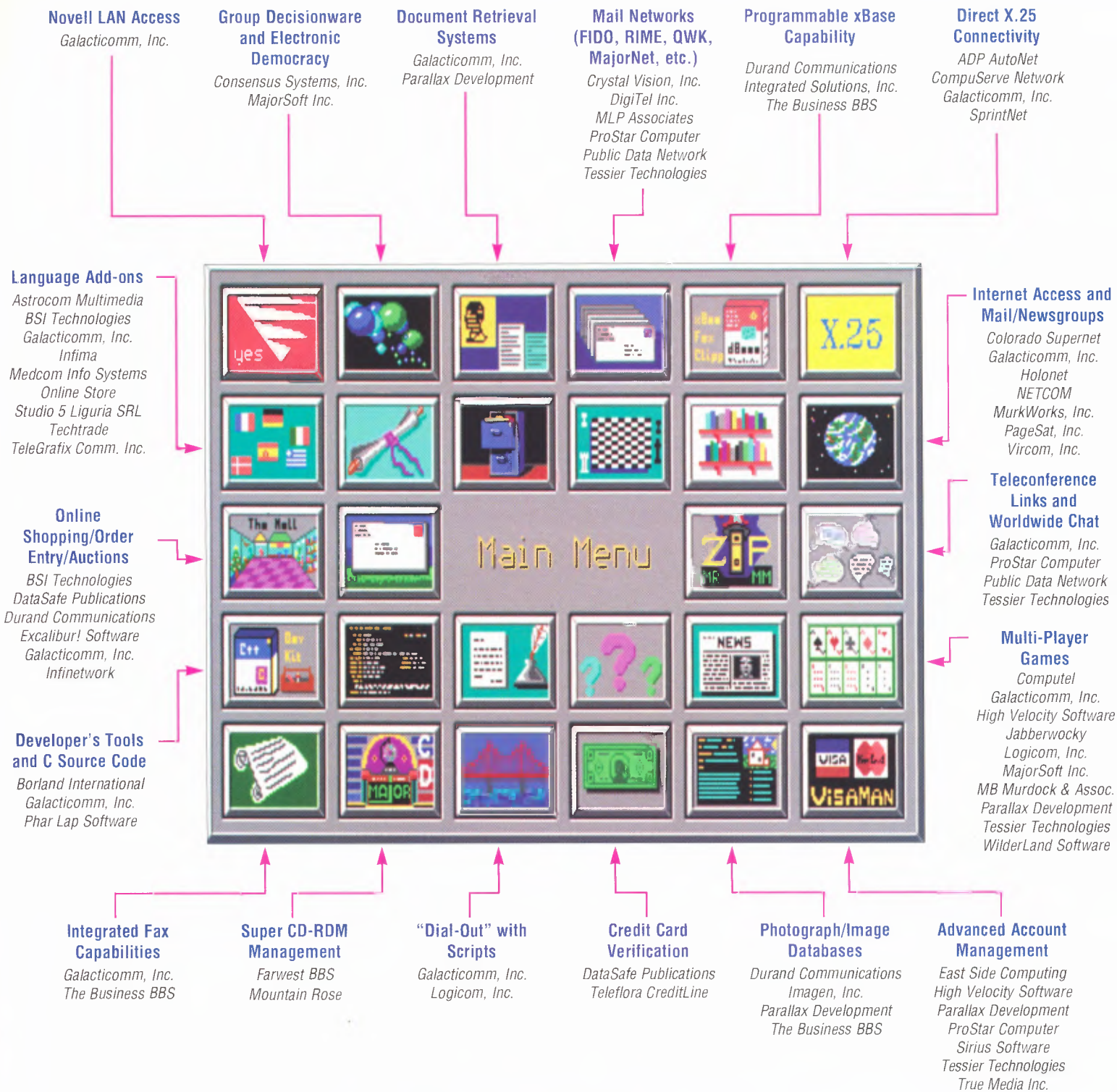
With our open MHS support, you can gateway to almost every mail network on the planet: the Internet, X.400 services, DaVinci E-mail, cc:Mail, HP Open Mail, CompuServe, MCI Mail, FidoNet, RIME, QWK, MajorNet, NetACCESS, and WorldLink — just to name a few.

Need to run existing DOS programs online? Connect adjacent computers with serial links to operate "door" software such as xBase and Paradox applications. The DOORWAY package by TriMark Engineering enables almost any text-based DOS program to be redirected through your system to remote users.

Many translators and international VARs have released alternate language interfaces: Spanish, German, French, Italian, and many others. You can even plug in new presentation protocols such as NAPLPS or your own custom client interface. You can set up your own languages — Portuguese/ANSI, Novice/RIP, Japanese/NAPLPS, etc. — which let you cater to special groups and dialects without any programming.

And you can draw upon our worldwide network of Ambassador Dealers for turnkey installation, custom development, training seminars, network integration, consulting services, and more.





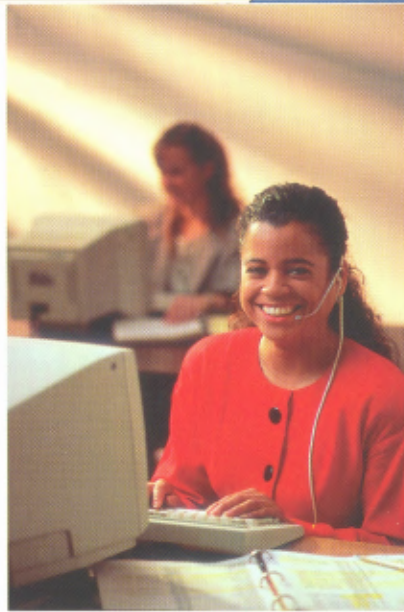
“What’s really great about The Major BBS is that I can choose from a wide range of third-party software for just about any application I can imagine. I have already installed over a dozen third-party modules.”

*Bob Lyons
Greenpeace*

“The Major BBS has saved us more than \$3 million since 1991.”

Mark Flint

Blue Cross/Blue Shield



Here are just agencies that

Everything you need to get started is included in the baseline package: E-mail, Forums, File Libraries, Polls and Questionnaires, Doors support, a User Registry, and all the underlying operator management, configuration, security and accounting capabilities. A Quick Start booklet gets you on the air fast. You also receive a 442-page reference manual detailing how to take advantage of the system's full power.

At any point, you can add User Six-Packs and multi-user hardware, extra connectivity through the Advanced LAN Option and the X.25 Software Option, new functionality such as Major Gateway/Internet, or any combination of third-party enhancements. A full 30-day money back guarantee is provided with every one of our products.

Satisfaction guaranteed

World-class support

A platform for growth

The Major BBS[®]

Technical support is freely available via phone and fax from 8:30 a.m. to 6:00 p.m. Eastern time. You can also reach our staff electronically on our own Demo System BBS (also accessible through the SprintNet X.25 network), or through the Internet (support@gcomm.com). You also get a free subscription to *The Major News*, the magazine for people who run their own online service. And our premium Automatic Software Update Program covers all software updates, a year at a time.

To run The Major BBS, you will need an IBM-compatible personal computer (386, 486, or Pentium) with 4MB of extended memory, MS-DOS 5.0 or later, a floppy drive, and 20MB of available hard drive space. For each Hayes-compatible modem, you will need an available COM1/COM2/COM3/COM4 port. LAN connections work with NetWare 2.1 or higher and NetWare Lite 1.0 or higher, and our MHS messaging works with MHS 1.5 or higher.



ABC-TV
A.C. Nielsen Company
Accolade Software
Activision
ADP/Autonet
Advanced Logic Research
Agfa Compugraphic
Airline Pilots Association
Allied-Signal
Alabama Power Company
Allen-Bradley
American Bankers Association
American Dental Association
American Disabled Foundation
American Express
American General Life Insurance
American Hospital Association
AMF Bowling
Archdiocese of Chicago
Arkansas Electric Cooperative
Arthur Andersen & Co.
Artisoft, Inc.
Associated Press
AST Research, Inc.
AT&T
Baltimore Gas & Electric
Bank of America
Bankers Mortgage Corp.
Barter America
Becton Dickinson Micro-Biological
Bio-Rad Laboratories
Blue Cross/Blue Shield
Boca Research, Inc.
Borland International
Broderbund Software, Inc.
Broward County, FL Sheriff's Office
Bureau of the Census
Cable & Wireless Communications
California Assoc. of Realtors
California Trucking Association
CAP Gemini America
Carrera Eyewear
Centers for Disease Control
Central Point Software, Inc.
Century 21 Communications
Chase Manhattan Bank
Chevron
Chicago Mercantile Exchange
Christian Science Publishing
CitiBank
Citizen America Corporation
City Polytechnic Hong Kong
Clarion Software
Clemson University
Commonwealth of Kentucky
CompuServe, Inc.

“I know I've found my BBS.”

Steve Gibson
InfoWorld

*a few of the corporations, associations, schools, and government
have bought our hardware or software over the past few years:*

Computerland Corporation	Kent State University	Northeastern University	The Programmer's Shop
Council of Better Business Bureaus	Korg USA, Inc.	Northern Telecom, Inc.	The Reynolds Company
Dade County, FL School Board	Lafayette College	Northwestern University	The Upjohn Company
Delaware County, PA Government	Lever Brothers, Inc.	Novell	The World Bank
Dell Computer Corp.	Levi Strauss & Co. (Canada), Inc.	Office Depot, Inc.	TRW, Inc.
Digicom Systems, Inc.	Lincoln National Bank	Ohio College of Podiatric Medicine	Unisys Corp.
Digital Equipment Corporation	Litton Amecom	Ohio Dept. of Human Services	United Artists Entertainment
Dow Jones & Co.	Logitech, Inc.	Oklahoma Department of Tourism	United Cerebral Palsy
DRI/McGraw-Hill	Los Alamos National Laboratory	Packard Bell	United Press International
Dun & Bradstreet	Los Angeles Times	Peat Marwick Thorne	United Telecom/US Sprint
Dupont Company	Masonic Home of New Jersey	Phar Lap Software, Inc.	United Way
Eastman Kodak	Martin Marietta Data Systems	Polaroid/MDS	Universal City Studios, Inc.
Econo Lodges of America	Matsushita Electric Corp. (Panasonic)	Polymer Laboratories	University of California
Egghead Discount Software	Maxtor Colorado Corporation	Practical Peripherals	University of Connecticut
Electronic Data Systems Corp.	McDonnell Douglas	Premier Radio Networks	University of Florida
Embry Riddle University	MCI	Prodigy Services Company	University of Illinois
EPA National Computer Center	Mead Data Central	Prudential Securities	University of Maryland
Exec-PC	MetLife Healthcare	QMS, Inc.	University of Nebraska
Exxon Employee's Club	Metro Dade Co., FL Public Access	Racal-Datacom, Inc.	University of North Carolina
Exxon Research	Miami Herald	Radio Free Europe	University of Oregon
Fairfax County, VA Public Schools	Michigan Bell Telephone Company	Ralston-Purina	University of Pittsburgh
Federal Bureau of Prisons	Michigan Dept. of Natural Resources	ReMax International	University of Vermont
Federal Reserve Bank of New York	Michigan State University	Rockwell International	University of Wisconsin
Fidelity Union Life Insurance Co.	Microcom, Incorporated	Rollins College	University of Wyoming
First American Title	Microsoft Corporation	Ryder Auto Carrier Division	US Air Force
Florida Department of Revenue	Milwaukee Public Schools	Salvation Army	US Army
Fujitsu	Ministry of Revenue (Canada)	Scott Paper Co.	US Bureau of Mines
Fulton Bank of Pennsylvania	Mississippi Chamber of Commerce	Scribner, Jackson Associates	US Bureau of the Census
Gateway 2000	Missouri House of Representatives	Sears Mortgage Corp.	US Center for Disease Control
General Dynamics	Mitel Corporation	Sega of America, Inc.	US Coast Guard
General Services Administration	Mitsubishi Caterpillar, Inc.	Sensormatic Electronics	US Department of Education
GHI Medicare	Mobil Oil Corporation	Sierra Club	US Department of Justice/DEA
Gibson Research Corporation	Monet Jewelers	Sierra On-Line, Inc.	US Department of HUD
GTE	Motorola, Inc.	Singapore Airlines, Ltd.	US Dept. of Labor/Wage Appeals
Guam Department of Education	Mount Sinai Medical Center	Six Flags Corporation	US Dept. of Natural Resources
Gupta Technology, Inc.	NASDAQ	SmithKline Beecham	US Department of State Supervision
H&R Block Canada, Inc.	NASPA	Software Publisher's Association	US Department of Transportation
Harvard Business Services	National Asbestos Council, Inc.	Sony Music Entertainment Co.	US Department of Treasury
Hawaii State Bar Association	National Association of Realtors	South Dakota State University	US Environmental Protection Agency
Hewlett-Packard Australia	National Assoc. of 7-11 Franchisers	Southwestern Bell Telephone	US Fish and Wildlife Service
Holiday Inn, Inc.	National Casualty Co.	State of Alaska	US General Accounting
Honeywell, Inc.	National City Bank	State of California	US Government Printing Office
Honolulu City Council	National Florist Directory	State of Colorado	US Immigration & Natural Resources
Hong Kong Telephone	National Library of Medicine	State of Maryland	US Information Agency
Illinois Federation of Teachers	National Pork Producers	Supra Corporation	US Navy
Illinois State Board of Education	National Weather Service	Symantec Corporation	US Patent and Trademark Office
Iowa State University	NATO Procurement	3M Health Information Systems	US Postal Service
InaCom Corp.	Nebraska Public Power District	TDK Recording Media Europe SA	US Small Business Administration
Indiana Bell Telephone Company	Nestle USA	Tektronix Federal Systems, Inc.	US West Advanced Technologies
Indiana University	New York Life Insurance Company	Teleflora CreditLine	VA Medical Center
Intel Corp.	New York Power Authority	Tenneco Gas	Weber Aircraft
Internal Revenue Service	New York Telephone Co.	Tennessee Valley Authority	Westinghouse Nuclear Training
Johnsonville Foods	New York Times	Texas Association of Realtors	Whittle Communications
J.P. Whitney Enterprises	Nissan Motor Corporation	Texas Instruments, Inc.	WordPerfect Corporation
Kansas Department of HRS	Norand Corporation	Texas Parks and Wildlife Dept.	Wyoming Army National Guard
Kemper Financial Services	North American Van Lines	The Money Store	Zeos International Ltd.

For many years now, our technology has been the "secret weapon" of organizations such as AST Research, CitiBank, AT&T, and Epson America. We invite you to join the list of satisfied and successful customers who have chosen The Major BBS.

To place your order or to reach the dealer nearest you, just call:

1-800-328-1128

(or 305-583-5990 outside the United States and Canada)

Galacticomm, Inc.
4101 SW 47th Ave., Suite 101
Fort Lauderdale, FL 33314

Voice: (305) 583-5990
Fax: (305) 583-7846
BBS: (305) 583-7808

 GALACTICOMM

